

Embargoed until 10:45am – 17 June 2010

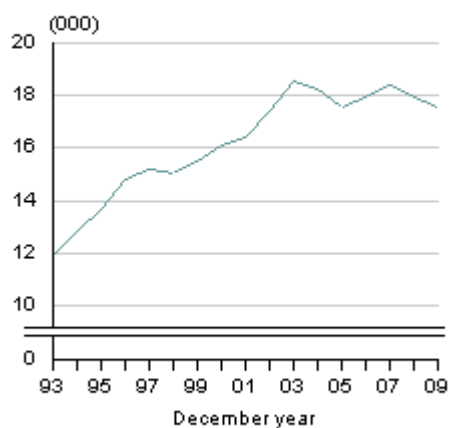
## Abortion Statistics: Year ended December 2009

### Key points

In the year ended December 2009:

- 17,550 abortions were performed in New Zealand, down from 17,940 in 2008.
- The general abortion rate was 19.2 abortions per 1,000 women aged 15–44 years, down from 19.7 per 1,000 in 2008, and lower than the peak rate of 20.8 per 1,000 in 2003.
- Women aged 20–24 years had the highest abortion rate (36 abortions per 1,000 women aged 20–24 years).
- The median age of women having an abortion was 24 years.
- Most abortions (63 percent) were a woman's first abortion.

Number of abortions  
1993–2009



Source: Statistics New Zealand

General abortion rate  
1993–2009



Source: Statistics New Zealand

Cathryn Ashley-Jones  
Acting Government Statistician

17 June 2010  
ISSN 1178-0193

# Commentary

## Number of abortions

A total of 17,550 abortions were performed in New Zealand in the year ended December 2009, down from 17,940 in 2008, but up from 15,500 a decade earlier in 1999. The highest number of induced abortions recorded in New Zealand was 18,510 in 2003.

## Abortion rates

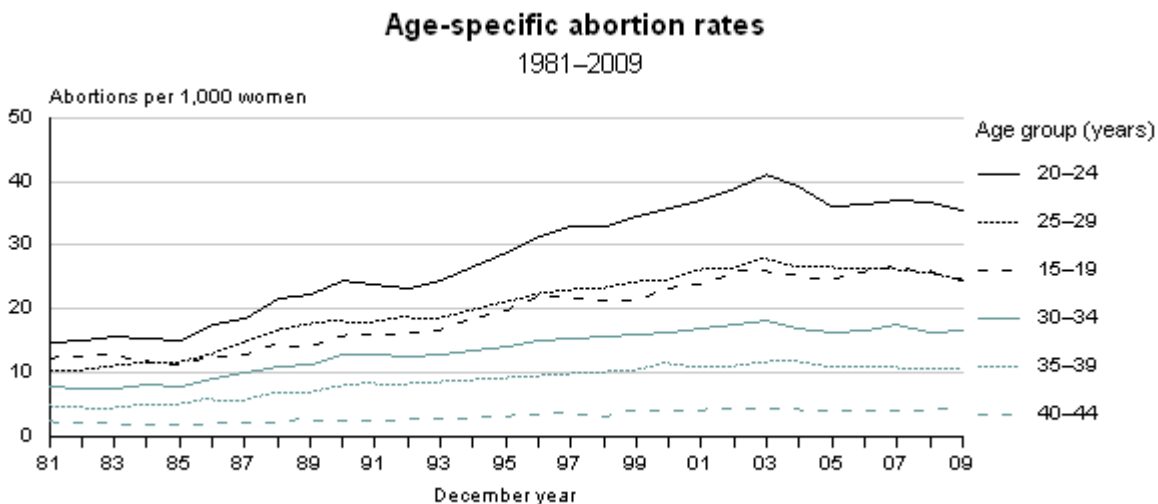
It is important to note that the legal environment and the provision of abortion services affect comparisons over time in abortion rates and in the number of abortions.

The general abortion rate (abortions per 1,000 women aged 15–44 years) decreased from 19.7 in 2008 to 19.2 in 2009. The general abortion rate was 18.0 per 1,000 in 1999.

The total abortion rate measures the average number of abortions that 1,000 women would have during their life (based on current age-specific abortion rates). The total abortion rate for 2009 was 583 abortions per 1,000 women, which is 5 percent higher than the rate of 554 per 1,000 recorded a decade earlier in 1999. However, the 2009 rate is 10 percent lower than the peak rate of 648 per 1,000 in 2003.

## Abortions by age of women

Women aged 20–24 years have more abortions than any other age group, accounting for approximately 3 out of 10 abortions in any year. Women in this age group also have the highest abortion rate (36 abortions per 1,000 women aged 20–24 years in 2009). Teenagers (15–19 years) and women aged 25–29 years both had abortion rates of 25 per 1,000 in 2009. The median age (half are younger, and half older, than this age) of women having an abortion was 24 years in 2009.



Source: Statistics New Zealand

## Proportion of known pregnancies ending in an abortion

In 2009, the abortion ratio was 218 abortions per 1,000 known pregnancies, similar to 2007 and 2008, but down from 247 per 1,000 in 2003. Known pregnancies include live births, stillbirths, and induced abortions combined.

## Previous abortions

In 2009, 63 percent of abortions were to women who had not had any previous abortions, compared with 67 percent in 1999. Twelve percent of women having an abortion in 2009 reported two or more previous abortions, compared with 9 percent in 1999.

## Duration of pregnancy

In 2009, one-half of abortions were performed in the ninth week of gestation or earlier, compared with just under one-third in 2003. Nearly one in five were performed in the 10th week of gestation.

## Ethnicity

Women having an abortion can state more than one ethnicity on the abortion notification form. For this reason, the number of abortions by ethnicity sum to more than the total number of abortions.

In 2009, there were 10,110 abortions to women who identified with the European ethnic group (either as their only ethnic group or as one of their ethnic groups). There were 4,130 abortions to women who identified with the Māori ethnic group, 2,890 women identified with the Asian ethnic group, 2,360 women identified with the Pacific ethnic group, and 220 women identified with the MELAA (Middle Eastern, Latin American, and African) group. Of the 20 women in the 'Other' ethnic group, almost all identified with the New Zealander ethnic group.

## International comparisons

Statistical coverage and laws relating to induced abortion affect international comparisons of abortion statistics. Consequently, differences between the abortion rate for New Zealand and other countries should be interpreted with care.

International data for 2009 is not available for many countries, so comparisons have been made using 2008 data unless otherwise stated. In 2008, the general abortion rate (number of abortions per 1,000 women aged 15–44 years) for New Zealand was 19.7 per 1,000. The following countries had lower rates: Germany (7.2), the Netherlands (8.7), Finland (10.6), Scotland (13.2), Denmark (14.3 in 2006), Norway (16.9), France (17.4 in 2007), and England and Wales (17.6). In Australia (19.3 in 2004), the United States (19.4 in 2005), and Sweden (21.3) the abortion rate was similar to New Zealand.

For technical information contact:  
Anne Howard  
Christchurch 03 964 8700  
**Email:** [demography@stats.govt.nz](mailto:demography@stats.govt.nz)

## **Technical notes**

### **Abortion statistics**

Abortion is defined as foetal loss excluding stillbirths, usually during the first 20 weeks of gestation. Induced abortions are those initiated voluntarily with the intention of terminating a pregnancy. All other abortions are called spontaneous abortions, even if an external cause is involved, such as injury or high fever.

All abortion statistics and derived abortion rates included in this release are based on legally induced abortions registered in New Zealand. No information is available on spontaneous or illegal abortions.

### **Grounds for abortion**

In New Zealand the grounds on which an abortion is permitted are described in the Contraception, Sterilisation, and Abortion Act 1977 and in section 187A of the Crimes Act 1961.

In any year, 98–99 percent of all abortions are performed because of serious danger to the mental health of the woman.

### **Source of abortion statistics**

Abortion information is obtained from the Abortion Supervisory Committee. For every abortion carried out as approved under the Contraception, Sterilisation, and Abortion Act 1977, a 'Notification of Abortion' form (ASC Form No. 4) must be filled in by the licensed abortion institution. This is then sent to the Abortion Supervisory Committee.

### **Changes in the collection of abortion statistics**

Changes have been made in the collection of ethnicity data. Before 2006, the MELAA (Middle Eastern, Latin American and African) ethnic group was included in the 'Other' ethnic group. From 2006, statistics on the MELAA group have been produced separately. In addition, the ethnic response 'New Zealander' was coded and included in the 'Other' ethnic group for the first time in 2006. In previous years, New Zealanders were included in the European ethnic group. Ethnicity data from 2006 onwards is not strictly comparable with ethnicity data for earlier years.

### **Live births**

Live births refer to live births registered in New Zealand by date of registration.

### **Stillbirths**

Stillbirth refers to the birth of a dead foetus that either weighs 400g or more when issued from its mother; or is issued from its mother after the 20th week of gestation.

## **Rounding**

Abortion figures contained in the tables attached to this release are unrounded. All other figures have been rounded. Derived figures (for example, abortion rates and ratios) have been calculated using unrounded data.

## **More information**

For more information, follow the [link](#) from the Technical notes of this release on the Statistics New Zealand website.

## **Copyright**

Information obtained from Statistics NZ may be freely used, reproduced, or quoted unless otherwise specified. In all cases Statistics NZ must be acknowledged as the source.

## **Liability**

While care has been used in processing, analysing and extracting information, Statistics NZ gives no warranty that the information supplied is free from error. Statistics NZ shall not be liable for any loss suffered through the use, directly or indirectly, of any information, product or service.

## **Timing**

Timed statistical releases are delivered using postal and electronic services provided by third parties. Delivery of these releases may be delayed by circumstances outside the control of Statistics NZ. Statistics NZ accepts no responsibility for any such delays.

## Tables

The following tables are printed with this Hot Off The Press and can also be downloaded from the Statistics New Zealand website in Excel format. If you do not have access to Excel, you may use the [Excel file viewer](#) to view, print and export the contents of the file.

1. Induced abortions, rates, and ratios, 1980–2009
2. Induced abortions by previous abortions, 1991–2009
3. Induced abortions by age of woman, 1991–2009
4. Abortion rates by age of woman, 1991–2009
5. Induced abortions by previous live births, 1991–2009
6. Induced abortions by duration of pregnancy, 1991–2009
7. Induced abortions by ethnicity of woman, 2002–2009
8. General abortion rate, New Zealand and selected low fertility countries, 1999–2008

Table 1

**Induced abortions, rates, and ratios**  
1980–2009

December year	Induced abortions <sup>(1)</sup>	Crude abortion rate <sup>(2)</sup>	General abortion rate <sup>(3)</sup>	Abortion ratio <sup>(4)(5)</sup>
1980	5,945	1.9	8.5	105
1981	6,759	2.1	9.6	117
1982	6,903	2.2	9.6	121
1983	7,198	2.2	9.7	124
1984	7,275	2.2	9.6	123
1985	7,130	2.2	9.3	120
1986	8,079	2.5	10.5	132
1987	8,789	2.7	11.3	137
1988	10,044	3.0	12.8	148
1989	10,200	3.1	12.9	149
1990	11,173	3.3	14.0	156
1991	11,613	3.3	14.0	162
1992	11,595	3.3	13.9	163
1993	11,893	3.3	14.3	168
1994	12,835	3.5	15.3	182
1995	13,652	3.7	16.1	191
1996	14,805	4.0	17.3	204
1997	15,208	4.0	17.6	208
1998	15,029	3.9	17.4	207
1999	15,501	4.0	18.0	213
2000	16,103	4.2	18.7	220
2001	16,410	4.2	19.1	226
2002	17,380	4.4	19.9	242
2003	18,511	4.6	20.8	247
2004	18,211	4.5	20.2	237
2005	17,531	4.2	19.3	232
2006	17,934	4.3	19.6	231
2007	18,382	4.3	20.1	222
2008	17,940	4.2	19.7	217
2009	17,550	4.1	19.2	218

1. Induced abortions registered in New Zealand. (Obtained from the Abortion Supervisory Committee.)

2. Per 1,000 mean estimated population.

3. Per 1,000 mean estimated number of women aged 15–44 years.

4. Per 1,000 live births, stillbirths, and abortions.

5. The abortion ratio for 1998 is based on the total number of birth notifications received by the Department of Internal Affairs. The abortion ratio for all other years is based on the number of births registered.

**Note:** Abortion rates from 1991 onwards are based on the mean estimated resident population. Before 1991, abortion rates are based on the mean estimated de facto population.

**Source:** Statistics New Zealand

Table 2

**Induced abortions by previous abortions<sup>(1)</sup>**  
1991–2009

December year	Previous abortions						Total abortions
	None		One		Two or more		
	Number	Percent	Number	Percent	Number	Percent	
1991	8,913	76.8	2,163	18.6	537	4.6	11,613
1992	8,716	75.2	2,249	19.4	630	5.4	11,595
1993	8,813	74.1	2,340	19.7	740	6.2	11,893
1994	9,400	73.2	2,613	20.4	822	6.4	12,835
1995	9,806	71.8	2,892	21.2	954	7.0	13,652
1996	10,576	71.4	3,162	21.4	1,067	7.2	14,805
1997	10,667	70.1	3,356	22.1	1,185	7.8	15,208
1998	10,302	68.5	3,504	23.3	1,223	8.1	15,029
1999	10,442	67.4	3,710	23.9	1,349	8.7	15,501
2000	10,710	66.5	3,851	23.9	1,542	9.6	16,103
2001	10,830	66.0	3,961	24.1	1,619	9.9	16,410
2002	11,458	65.9	4,164	24.0	1,758	10.1	17,380
2003	12,169	65.7	4,473	24.2	1,869	10.1	18,511
2004	11,696	64.2	4,490	24.7	2,025	11.1	18,211
2005	11,210	63.9	4,345	24.8	1,976	11.3	17,531
2006	11,548	64.4	4,360	24.3	2,026	11.3	17,934
2007	11,884	64.7	4,380	23.8	2,118	11.5	18,382
2008	11,312	63.1	4,469	24.9	2,159	12.0	17,940
2009	11,104	63.3	4,423	25.2	2,023	11.5	17,550

1. Induced abortions registered in New Zealand. (Obtained from the Abortion Supervisory Committee.)

**Source:** Statistics New Zealand

Table 3

**Induced abortions by age of woman<sup>(1)</sup>**  
1991–2009

December year	Age group (years)								All ages
	11–14	15–19	20–24	25–29	30–34	35–39	40–44	45+	
<b>Number</b>									
1991	43	2,283	3,450	2,592	1,845	1,085	300	15	11,613
1992	42	2,232	3,398	2,661	1,869	1,063	308	22	11,595
1993	52	2,250	3,575	2,608	1,920	1,142	322	24	11,893
1994	43	2,457	3,900	2,787	2,056	1,214	350	28	12,835
1995	42	2,594	4,164	2,985	2,158	1,282	390	37	13,652
1996	60	2,909	4,397	3,239	2,315	1,419	430	36	14,805
1997	56	2,906	4,484	3,378	2,369	1,502	492	21	15,208
1998	65	2,832	4,355	3,381	2,368	1,559	444	25	15,029
1999	56	2,846	4,477	3,447	2,435	1,642	560	38	15,501
2000	74	3,107	4,548	3,399	2,496	1,823	613	43	16,103
2001	66	3,240	4,728	3,450	2,555	1,730	593	48	16,410
2002	78	3,602	5,124	3,450	2,676	1,715	686	49	17,380
2003	89	3,757	5,670	3,619	2,800	1,846	692	38	18,511
2004	85	3,758	5,528	3,501	2,644	1,916	721	58	18,211
2005	92	3,718	5,203	3,491	2,520	1,773	687	47	17,531
2006	105	3,978	5,314	3,530	2,497	1,777	691	42	17,934
2007	104	4,173	5,445	3,574	2,547	1,814	667	58	18,382
2008	83	4,097	5,396	3,591	2,290	1,754	675	54	17,940
2009	79	3,873	5,332	3,539	2,311	1,692	674	50	17,550
<b>Percent</b>									
1991	0.4	19.7	29.7	22.3	15.9	9.3	2.6	0.1	100.0
1992	0.4	19.2	29.3	22.9	16.1	9.2	2.7	0.2	100.0
1993	0.4	18.9	30.1	21.9	16.1	9.6	2.7	0.2	100.0
1994	0.3	19.1	30.4	21.7	16.0	9.5	2.7	0.2	100.0
1995	0.3	19.0	30.5	21.9	15.8	9.4	2.9	0.3	100.0
1996	0.4	19.6	29.7	21.9	15.6	9.6	2.9	0.2	100.0
1997	0.4	19.1	29.5	22.2	15.6	9.9	3.2	0.1	100.0
1998	0.4	18.8	29.0	22.5	15.8	10.4	3.0	0.2	100.0
1999	0.4	18.4	28.9	22.2	15.7	10.6	3.6	0.2	100.0
2000	0.5	19.3	28.2	21.1	15.5	11.3	3.8	0.3	100.0
2001	0.4	19.7	28.8	21.0	15.6	10.5	3.6	0.3	100.0
2002	0.4	20.7	29.5	19.9	15.4	9.9	3.9	0.3	100.0
2003	0.5	20.3	30.6	19.6	15.1	10.0	3.7	0.2	100.0
2004	0.5	20.6	30.4	19.2	14.5	10.5	4.0	0.3	100.0
2005	0.5	21.2	29.7	19.9	14.4	10.1	3.9	0.3	100.0
2006	0.6	22.2	29.6	19.7	13.9	9.9	3.9	0.2	100.0
2007	0.6	22.7	29.6	19.4	13.9	9.9	3.6	0.3	100.0
2008	0.5	22.8	30.1	20.0	12.8	9.8	3.8	0.3	100.0
2009	0.5	22.1	30.4	20.2	13.2	9.6	3.8	0.3	100.0

1. Induced abortions registered in New Zealand. (Obtained from the Abortion Supervisory Committee.)

**Note:** Percentages may not sum to stated totals due to rounding.

**Source:** Statistics New Zealand

Table 4

**Abortion rates by age of woman<sup>(1)</sup>**

1991–2009

December year	Age group (years)								Total abortion rate <sup>(3)</sup>	Median age of women having an abortion (years) <sup>(4)</sup>
	11–14	15–19	20–24	25–29	30–34	35–39	40–44	45+ <sup>(2)</sup>		
1991	0.4	15.9	23.8	17.9	12.8	8.4	2.4	0.2	406.7	25.1
1992	0.4	16.0	23.2	18.7	12.6	8.0	2.5	0.2	406.5	25.2
1993	0.5	16.6	24.3	18.5	12.7	8.4	2.6	0.2	417.4	25.1
1994	0.4	18.5	26.7	19.8	13.4	8.7	2.8	0.2	450.7	25.0
1995	0.4	19.7	28.9	20.9	14.0	8.9	3.0	0.3	479.2	25.0
1996	0.6	22.0	31.3	22.2	15.0	9.4	3.2	0.3	519.3	25.0
1997	0.5	21.9	32.8	22.9	15.4	9.7	3.6	0.2	534.2	25.2
1998	0.6	21.3	32.8	23.1	15.5	9.8	3.1	0.2	531.6	25.3
1999	0.5	21.4	34.6	24.1	16.0	10.2	3.9	0.3	554.2	25.5
2000	0.7	23.1	35.7	24.5	16.4	11.4	4.1	0.3	580.4	25.4
2001	0.6	23.8	36.9	25.9	16.8	10.9	3.9	0.4	594.9	25.2
2002	0.6	25.6	38.8	26.4	17.4	10.8	4.4	0.4	621.3	24.9
2003	0.7	25.9	41.1	27.9	18.0	11.6	4.3	0.3	648.2	24.7
2004	0.7	25.4	39.1	26.8	17.0	12.0	4.3	0.4	628.7	24.7
2005	0.7	24.6	36.2	26.5	16.4	11.0	4.1	0.3	600.8	24.7
2006	0.9	25.8	36.5	26.4	16.7	10.9	4.1	0.3	608.2	24.5
2007	0.9	26.6	37.2	26.2	17.5	11.0	4.0	0.4	619.0	24.5
2008	0.7	26.0	36.7	25.8	16.2	10.7	4.1	0.3	601.2	24.3
2009	0.7	24.5	35.6	24.9	16.5	10.5	4.2	0.3	583.3	24.4

1. Per 1,000 mean female estimated resident population in each age group.

2. Per 1,000 mean female estimated resident population aged 45–49 years.

3. The average number of abortions that 1,000 women would have during their life if they experienced the age-specific abortion rates of a given period (usually a year). It excludes the effect of mortality.

4. Half of those women having an abortion are younger and half are older than this age.

**Note:** Abortion rates refer to induced abortions registered in New Zealand.

**Source:** Statistics New Zealand

Table 5

**Induced abortions by previous live births<sup>(1)</sup>**  
1991–2009

December year	Previous live births						Total abortions
	None		One		Two or more		
	Number	Percent	Number	Percent	Number	Percent	
1991	5,810	50.0	2,091	18.0	3,712	32.0	11,613
1992	5,616	48.4	2,152	18.6	3,827	33.0	11,595
1993	5,733	48.2	2,162	18.2	3,998	33.6	11,893
1994	6,186	48.2	2,312	18.0	4,337	33.8	12,835
1995	6,507	47.7	2,555	18.7	4,590	33.6	13,652
1996	7,130	48.2	2,777	18.8	4,898	33.1	14,805
1997	7,189	47.3	2,948	19.4	5,071	33.3	15,208
1998	6,977	46.4	3,082	20.5	4,970	33.1	15,029
1999	7,141	46.1	3,090	19.9	5,270	34.0	15,501
2000	7,547	46.9	3,133	19.5	5,423	33.7	16,103
2001	7,682	46.8	3,148	19.2	5,580	34.0	16,410
2002	8,547	49.2	3,223	18.5	5,610	32.3	17,380
2003	9,451	51.1	3,312	17.9	5,748	31.1	18,511
2004	9,216	50.6	3,366	18.5	5,629	30.9	18,211
2005	8,894	50.7	3,245	18.5	5,392	30.8	17,531
2006	9,078	50.6	3,401	19.0	5,455	30.4	17,934
2007	9,197	50.0	3,582	19.5	5,603	30.5	18,382
2008	8,721	48.6	3,596	20.0	5,623	31.3	17,940
2009	8,370	47.7	3,580	20.4	5,600	31.9	17,550

1. Induced abortions registered in New Zealand. (Obtained from the Abortion Supervisory Committee.)

**Source:** Statistics New Zealand

Table 6

**Induced abortions by duration of pregnancy<sup>(1)</sup>**  
1991–2009

December year	Duration of pregnancy (weeks)								Total
	Under 8	8	9	10	11	12	13	14+	
<b>Number</b>									
1991	826	2,662	2,592	2,757	1,113	976	272	415	11,613
1992	715	2,305	2,733	2,868	1,202	935	296	541	11,595
1993	418	2,121	2,704	3,246	1,373	1,155	311	565	11,893
1994	350	1,969	2,741	3,527	1,792	1,420	442	594	12,835
1995	351	1,633	2,354	2,919	2,436	2,322	912	725	13,652
1996	351	1,613	2,559	3,560	2,898	2,316	754	754	14,805
1997	449	1,757	2,747	3,799	2,987	2,064	715	690	15,208
1998	574	1,923	3,189	3,436	2,323	1,913	957	714	15,029
1999	775	1,948	3,047	3,502	2,496	1,935	1,030	768	15,501
2000	854	2,047	3,135	3,564	2,627	2,062	985	829	16,103
2001	925	1,790	2,969	3,622	2,721	2,270	1,227	886	16,410
2002	1,129	1,751	2,773	3,820	3,019	2,633	1,300	955	17,380
2003	1,281	1,824	2,710	3,882	3,456	2,903	1,494	961	18,511
2004	1,263	1,835	3,505	3,933	3,007	2,613	1,164	891	18,211
2005	1,271	1,782	2,928	3,620	3,011	2,640	1,350	929	17,531
2006	1,526	1,843	3,012	3,729	2,990	2,634	1,259	941	17,934
2007	1,478	2,413	3,558	3,671	3,131	2,631	478	1,022	18,382
2008	1,687	2,875	3,743	3,535	2,655	2,026	438	981	17,940
2009	1,941	3,294	3,580	3,149	2,412	1,768	408	998	17,550
<b>Percent</b>									
1991	7.1	22.9	22.3	23.7	9.6	8.4	2.3	3.6	100.0
1992	6.2	19.9	23.6	24.7	10.4	8.1	2.6	4.7	100.0
1993	3.5	17.8	22.7	27.3	11.5	9.7	2.6	4.8	100.0
1994	2.7	15.3	21.4	27.5	14.0	11.1	3.4	4.6	100.0
1995	2.6	12.0	17.2	21.4	17.8	17.0	6.7	5.3	100.0
1996	2.4	10.9	17.3	24.0	19.6	15.6	5.1	5.1	100.0
1997	3.0	11.6	18.1	25.0	19.6	13.6	4.7	4.5	100.0
1998	3.8	12.8	21.2	22.9	15.5	12.7	6.4	4.8	100.0
1999	5.0	12.6	19.7	22.6	16.1	12.5	6.6	5.0	100.0
2000	5.3	12.7	19.5	22.1	16.3	12.8	6.1	5.1	100.0
2001	5.6	10.9	18.1	22.1	16.6	13.8	7.5	5.4	100.0
2002	6.5	10.1	16.0	22.0	17.4	15.1	7.5	5.5	100.0
2003	6.9	9.9	14.6	21.0	18.7	15.7	8.1	5.2	100.0
2004	6.9	10.1	19.2	21.6	16.5	14.3	6.4	4.9	100.0
2005	7.3	10.2	16.7	20.6	17.2	15.1	7.7	5.3	100.0
2006	8.5	10.3	16.8	20.8	16.7	14.7	7.0	5.2	100.0
2007	8.0	13.1	19.4	20.0	17.0	14.3	2.6	5.6	100.0
2008	9.4	16.0	20.9	19.7	14.8	11.3	2.4	5.5	100.0
2009	11.1	18.8	20.4	17.9	13.7	10.1	2.3	5.7	100.0

1. Induced abortions registered in New Zealand. (Obtained from the Abortion Supervisory Committee.)

**Note:** Percentages may not sum to stated totals due to rounding.

**Source:** Statistics New Zealand

Table 7

**Induced abortions by ethnicity of woman<sup>(1)</sup>**  
2002–2009

Ethnic group <sup>(2)</sup>	December year							
	2002	2003	2004	2005	2006	2007	2008	2009
European <sup>(3)</sup>	9,763	10,271	10,358	9,732	9,859	10,546	10,499	10,113
Māori	3,899	4,053	3,906	3,882	4,097	4,304	4,250	4,131
Pacific	2,009	2,161	2,060	2,050	2,134	2,289	2,230	2,360
Asian	2,860	3,502	3,175	2,957	2,935	2,947	2,875	2,892
MELAA <sup>(4)</sup>	...	...	...	...	213	203	206	216
Other (pre 2006) <sup>(5)</sup>	152	193	214	220	...	...	...	...
Other (from 2006) <sup>(6)</sup>	...	...	...	...	51	48	25	23
Not stated	0	3	7	149	211	246	64	57
<b>Induced abortions</b>	<b>17,380</b>	<b>18,511</b>	<b>18,211</b>	<b>17,531</b>	<b>17,934</b>	<b>18,382</b>	<b>17,940</b>	<b>17,550</b>

1. Induced abortions registered in New Zealand. (Obtained from the Abortion Supervisory Committee.)
2. People can belong to more than one ethnic group. For this reason, the number of abortions by ethnicity sum to more than the total number of abortions.
3. Before 2006, New Zealanders were included in the European ethnic group.
4. Middle Eastern, Latin American and African.
5. Includes MELAA and other ethnicities not elsewhere included.
6. Includes New Zealanders and other ethnicities not elsewhere included.

**Symbol:**

... Not applicable

**Source:** Statistics New Zealand

Table 8

**General abortion rate<sup>(1)</sup>****New Zealand and selected low fertility countries  
1999–2008**

Country	1999	2000	2001	2002	2003	2004	2005	2006	2007	2008
Australia	20.4	20.6	20.8	20.3	19.7	19.3	..	..	..	..
Denmark	15.1	14.6	14.3	14.1	14.7	14.4	14.4	14.3	..	..
England and Wales <sup>(2)</sup>	16.2	16.3	16.3	16.2	16.6	16.9	17.0	17.5	17.9	17.6
Finland	10.5	10.7	10.6	10.9	10.8	11.2	11.1	10.8	10.7	10.6
France	15.9	15.6	16.4	16.8	16.5	17.1	16.7 R	17.5 R	17.4	..
Germany	7.7	8.0	8.0	7.8	7.6	7.8 R	7.5	7.3	7.3	7.2
Netherlands <sup>(2)</sup>	7.4	8.0	8.4	8.7	8.5	8.7	8.6	8.6	8.6	8.7
NEW ZEALAND	18.0	18.7	19.1	19.9	20.8	20.2	19.3	19.6	20.1	19.7
Norway	15.5	16.0	15.2	14.8	15.1	15.3	15.1	15.5	16.1	16.9
Scotland	11.2	11.1	11.3	11.1	11.6	11.8	12.0	12.5	13.0	13.2
Sweden	18.1	18.3	18.7	19.6	20.2	20.0	20.2	20.6	21.0	21.3
United States	21.4	21.3	20.9	20.5	20.2	19.7	19.4	..	..	..

1. Per 1,000 mean estimated number of women aged 15–44 years.

2. Residents only.

**Symbols:**

R revised

.. figures not available

**Sources for international statistics:**

- a. Chan, A & Sage, L C (2005). Estimating Australia's abortion rates. *MJA (Medical Journal of Australia)*, 182:9, 447–452.
- b. Department of Health (2010). *Statistical Bulletin: Abortion Statistics, England and Wales: 2009*. [www.dh.gov.uk](http://www.dh.gov.uk) [8 June 2010].
- c. Federal Statistics Office, Germany (2010). [www.destatis.de](http://www.destatis.de) [10 June 2010].
- d. Information Services Division, NHS National Services Scotland (2010). *Abortions data*. [www.isdscotland.org/isd/1918.html](http://www.isdscotland.org/isd/1918.html) [2 June 2010].
- e. Institut National d'études Démographiques (2010). [www.ined.fr](http://www.ined.fr) [10 June 2010].
- f. Jones RK et al., Abortion in the United States: incidence and access to services, 2005, *Perspectives on Sexual and Reproductive Health*, 2008, 40(1):6–16.
- g. Laws, P J, Grayson, N & Sullivan, E A (2006). *Australia's mothers and babies 2004*. (Perinatal statistics series no. 18). Sydney: AIHW National Perinatal Statistics Unit.
- h. Ministry of Health, Welfare and Sport, Netherlands (2010). *Jaarrapportage 2008 van de wet afbreking zwangerschap*. [www.rijksoverheid.nl](http://www.rijksoverheid.nl) [10 June 2010].
- i. National Board of Health and Welfare. [www.socialstyrelsen.se](http://www.socialstyrelsen.se) [4 June 2010].
- j. National Institute for Health and Welfare (2009). *Induced abortions and sterilisations 2008*. [www.thl.fi](http://www.thl.fi) [4 June 2010].
- k. National Institute for Statistics and Economic Studies, France (2010). [www.insee.fr](http://www.insee.fr) [10 June 2010].
- l. Norwegian Institute of Public Health (2010). *Rapport om Svangerskapsavbrudd for 2008*. [www.fhi.no](http://www.fhi.no) [4 June 2010].
- m. Statistics Denmark (2008). "StatBank Denmark". [www.statbank.dk](http://www.statbank.dk) [28 May 2008].
- n. Statistics Finland (2009). "Statistical databases". [www.tilastokeskus.fi/index\\_en.html](http://www.tilastokeskus.fi/index_en.html) [4 June 2010].
- o. Statistics Norway (2009). [www.ssb.no](http://www.ssb.no) [4 June 2010].