

Assisted Dying Service data reporting

Assisted dying service data is published on a quarterly basis.

The Ministry of Health is responsible for overseeing and monitoring the assisted dying service, including collecting data. A summary of this data is released quarterly.

The next data summary will be available in July.

The Registrar (assisted dying) must provide an annual report to the Minister of Health by 30 June each year. This report will be published on the Ministry of Health website.

Service activity: 7 Nov 2021 – 31 Mar 2022

Assisted dying became legal in New Zealand from 7 November 2021. Subsequent reports will cover a three month period.

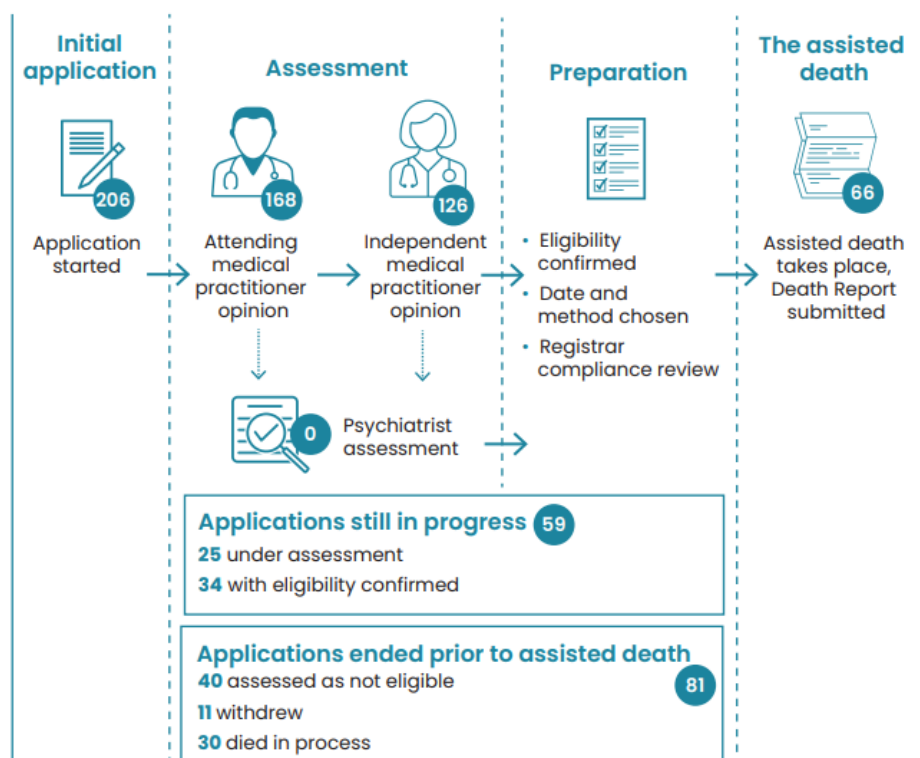
Overview of assisted dying applications

Figure One gives an overview of the pathway from initial application to an assisted death.

Between 7 November 2021 and 31 March 2022, 206 people applied for assisted dying. As at 31 March:

- 59 people were still in the process of assessment or preparation for assisted dying
- 81 people did not continue the process (due to being ineligible, withdrawing or dying of their condition)
- 66 people had an assisted death.

Figure One: Overview of applications received as at 31 March 2022



[Text description for diagram](#)

Demographics of applicants

Table One shows the demographic breakdown of applicants by ethnic group, gender, age group, diagnosis and palliative care status. The assisted dying service is relatively new, and numbers are small. It is expected that the percentage breakdowns will change over time.

As at 31 March:

- 79% of people that apply for assisted dying are NZ European/Pākehā
- 55% are women
- 74% are aged 65 years or older
- 65% have a cancer diagnosis
- 80% were receiving palliative care at the time of application.

Table One: Demographics of people that have applied for assisted dying

Demographic breakdown	Number of people	% of applicants	
Ethnic group	Māori	12	5.8
	Pacific	0	0.0
	Asian	5	2.4
	NZ European/Pākehā	162	78.6
	Other ethnic groups	27	13.1
Gender	Female	114	55.3
	Male	92	44.7
	Gender diverse	0	0.0
Age group	18-44 years	9	4.4

	45-64 years	44	21.4
	65-84 years	110	53.4
	85+ years	43	20.9
Diagnosis category	Cancer	133	64.6
	Neurological condition	21	10.2
	Other diagnosis	14	6.8
	Diagnosis not known	38	18.4
Receiving palliative care at time of application?	Yes	164	79.6
	No	39	18.9
	Not stated	3	1.5
Total		206	

Notes:

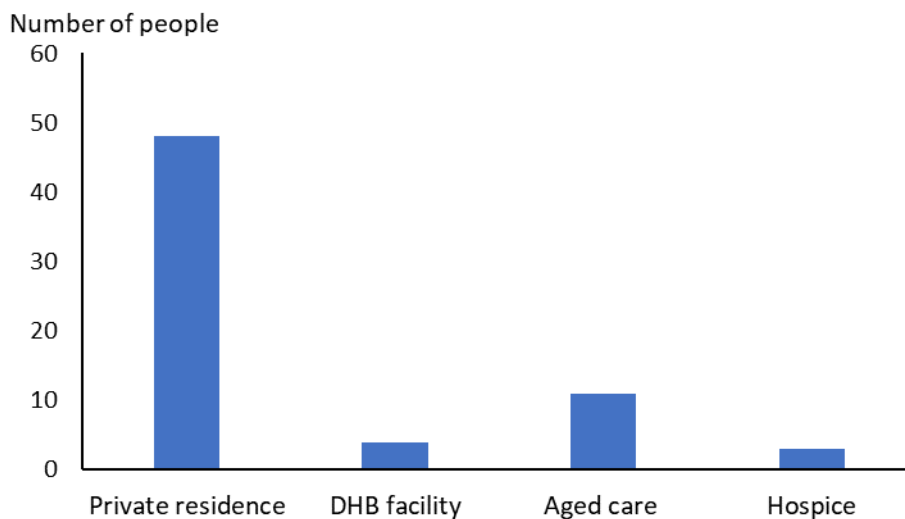
'Diagnosis not known' includes people that applied but have not yet had their first assessment with their Attending Medical Practitioner as well as those that withdrew or died before this assessment was completed.

Assisted deaths by location

As at 31 March 2022, 66 people had an assisted death. Assisted deaths can take place at the person's home or in the community. The breakdown by location is:

- 73% at the person's home or another private residence
- 17% in aged care facilities
- 6% in district health board facilities
- 4% in hospice facilities.

Figure Two: Assisted deaths by location



People assessed as not eligible

There are strict eligibility criteria for an assisted death. As at 31 March, 40 people had been assessed as ineligible for assisted dying.

A person may be found ineligible for more than one reason. The sum by reason is greater than the total number of people assessed as ineligible.

Table Two: Applications assessed as ineligible by reason and assessing practitioner

		Number of people	% of those not eligible
Reason ineligible (which criteria from the Act not met)	Not aged 18 years or over	0	0.0
	Not a New Zealand Citizen or permanent resident	2	5.0
	Not experiencing unbearable suffering unable to be relieved in a tolerable manner	16	40.0
	Not in an advanced state of irreversible decline in physical capability	17	42.5
	Does not suffer from a terminal illness that is likely to end their life within six months	26	65.0
	Not competent to make an informed decision about assisted dying	7	17.5
Which practitioner	Attending medical practitioner (AMP)	32	80.0
	Independent medical practitioner (IMP)	8	20.0
	Psychiatrist	0	0.0
Total people assessed as ineligible		40	

SCENZ Group practitioner lists

Table Three shows the distribution of health practitioners registered on the [SCENZ Group lists](#) by the DHB region of their usual working location and the role(s) for which they are available.

Figures below three have been suppressed for privacy reasons and are replaced with an 'S' in the table.

The SCENZ Group lists are dynamic and will fluctuate over time as new practitioners sign up and existing practitioners come off the lists.

Medical practitioners can be on the SCENZ list for more than one role, depending on their scope of practice (attending medical practitioner, independent medical practitioner, psychiatrist). The sum of counts for each role will be greater than the number of unique practitioners.

The table groups practitioners by the region of their usual working location. Many practitioners are willing to travel to provide assisted dying services. Funding for travel is covered by the Ministry.

Health practitioners providing services as an attending medical practitioner (AMP) or attending nurse practitioner (ANP) do not have to be on a SCENZ Group list. For example, general practitioners may act as the AMP for their own patients only and not register on the SCENZ Group AMP list.

Table Three: Count of practitioners by role and DHB region as at 31 March

Region	DHBs	Total unique practitioners	Attending medical practitioner	Independent medical practitioner	Psychiatrist	Nurse practitioner
Northern	Northland	40	25	28	3	6
	Waitematā					
	Auckland					

Counties Manukau						
Midlands	Waikato	21	13	14	S	S
	Lakes					
	Bay of Plenty					
	Tairāwhiti					
	Taranaki					
Central	Hawke's Bay	25	21	15	S	S
	Whanganui					
	MidCentral					
	Wairarapa					
	Hutt Valley					
	Capital & Coast					
Southern	Nelson Marlborough	44	32	26	5	S
	West Coast					
	Canterbury					
	South Canterbury					
	Southern					
Total		130	91	83	11	10

Text description for diagram

Diagram shows an overview of how the applications received up until 31 March have progressed through the assisted dying service pathway.

206 people applied for assisted dying.

168 first assessments were completed by attending medical practitioners.

126 second, independent, opinions were completed by independent medical practitioners.

No psychiatrist opinions have been completed.

59 of the 206 applications are still in process. 25 people are still in the assessment phase and 34 have completed assessment and had eligibility confirmed.

81 of the 206 applications ended prior to assisted death. 40 people were not eligible, 11 withdrew their application and 30 died of natural causes.

66 of the 206 people that applied have had an assisted death.